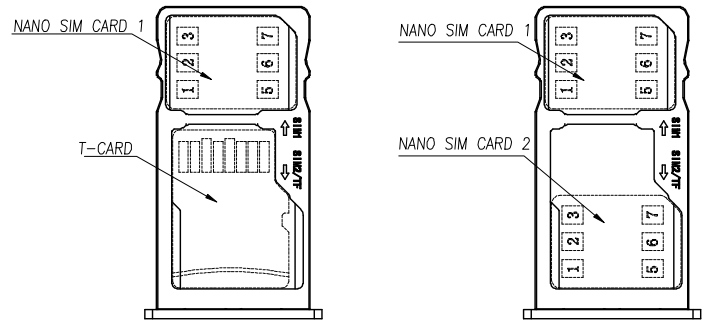
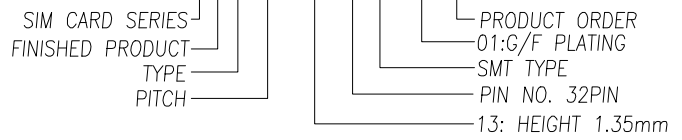


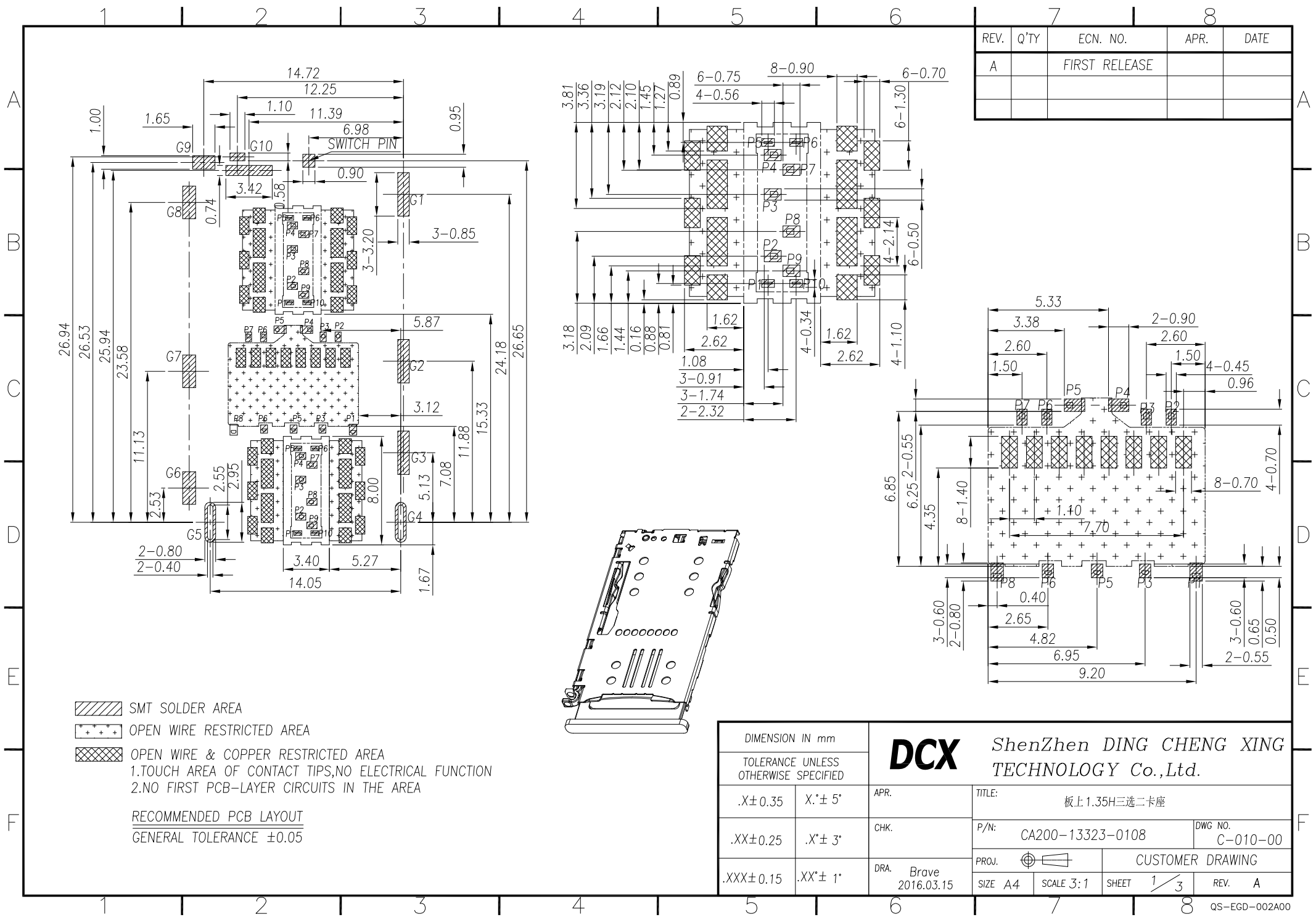
REV.	Q'TY	ECN. NO.	APR.	DATE
A		FIRST RELEASE		

- NOTES:
- MATERIAL:
 - 1-1 HOUSING:THERMOPLASTIC,UL 94V-0;COLOR:BLACK
 - 1-2 CONTACT:COPPER ALLOY
 - 1-3 CRANK:STAINLESS STEEL T=0.4mm
 - 1-4 ROD:STAINLESS STEEL T=0.5mm
 - 1-5 SHELL:STAINLESS STEEL T=0.15mm
 - 1-6 SWITCH BLOCK :THERMOPLASTIC,UL 94V-0,30%G/F FILLED; COLOR:BLACK
 - 1-7 SWITCH PIN:STAINLESS STEEL T=0.15mm
 - FINISH:
 - 2-1 CONTACT: GOLD PLATING ON CONTACT AREA(SEE P/N) 1u" Au PLATING ON SOLDERTAILS 50u" MIN. NICKEL UNDERPLATING OVER ALL
 - 2-2 SHELL: 1u" MIN GOLD PLATING ON SOLDER TAILS, 50u" NICKEL UNDERPLATED.
 - ELECTRICAL SPECIFICATIONS:
 - 3-1 VOLTAGE RATING: 50V
 - 3-2 WITHSTANDING VOLTAGE:AC250V R.M.S
 - 3-3 CURRENT RATING: 0.5A
 - 3-4 INSULATION RESISTANCE:1000MEG.OHM MIN AT DC 250V
 - 3-5 CONTACT RESISTANCE:100 MILL.OHM MAX
 - 3-6 OPERATION TEMPERATURE: -20° TO +85°
 - 3-7 DURABILITY: 1000 CYCLES
 - PART NO:

CA200-13323-0108



DIMENSION IN mm		TOLERANCE UNLESS OTHERWISE SPECIFIED		DCX ShenZhen DING CHENG XING TECHNOLOGY Co.,Ltd.	
.X±0.35	X.*± 5'	APR.	TITLE:	板上1.35H三选二卡座	
.XX±0.25	.X.*± 3'	CHK.	P/N:	CA200-13323-0108	DWG NO. C-010-00
.XXX±0.15	.XX.*± 1'	DRA. Brave 2016.03.15	PROJ.	CUSTOMER DRAWING	
			SIZE A4	SCALE 3:1	SHEET 1/3
					REV. A



REV.	Q'TY	ECN. NO.	APR.	DATE
A		FIRST RELEASE		

- SMT SOLDER AREA
- OPEN WIRE RESTRICTED AREA
- OPEN WIRE & COPPER RESTRICTED AREA
 1.TOUCH AREA OF CONTACT TIPS,NO ELECTRICAL FUNCTION
 2.NO FIRST PCB-LAYER CIRCUITS IN THE AREA

RECOMMENDED PCB LAYOUT
 GENERAL TOLERANCE ±0.05

DIMENSION IN mm		TOLERANCE UNLESS OTHERWISE SPECIFIED	
.X±0.35	.X.*± 5*	APR.	TITLE: 板上1.35H三选二卡座
.XX±0.25	.X.*± 3*	CHK.	P/N: CA200-13323-0108
.XXX±0.15	.XX.*± 1*	DRA. Brave 2016.03.15	DWG NO. C-010-00
		PROJ. CUSTOMER DRAWING	
SIZE A4	SCALE 3:1	SHEET 1/3	REV. A