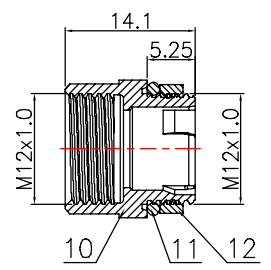
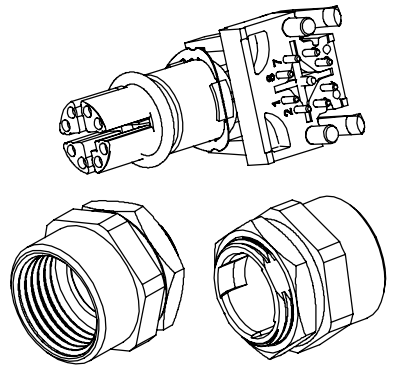
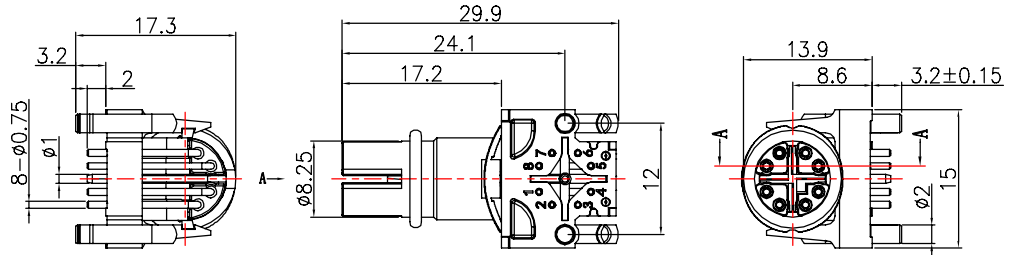
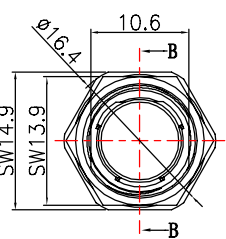




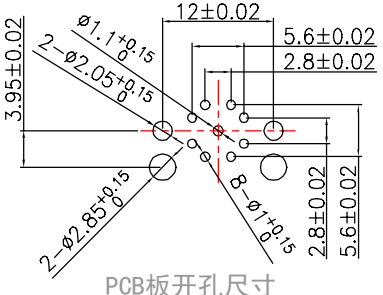
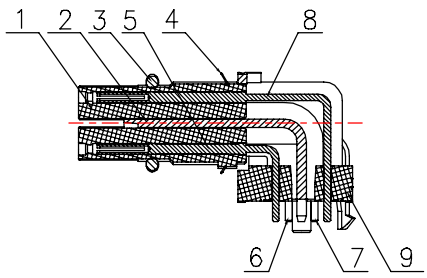
REV.	Q'TY	ECN. NO.	APR.	DATE



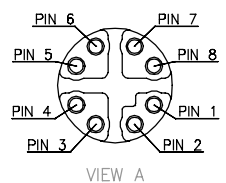
剖面图 B-B



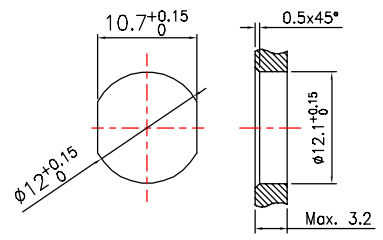
剖面图 A-A



PCB板开孔尺寸



VIEW A



面板开孔尺寸

技术参数

连接方式: 螺纹连接  
 接线方式: 焊板  
 类型: 直式插座  
 编码: X型  
 温度范围: -45° C ~ +85° C  
 防护等级: IP67  
 插拔周期: ≥100

额定电压: 60V AC/DC  
 额定电流: 0.5A  
 接触电阻: ≤5 mΩ  
 绝缘电阻: ≥100 MΩ

所有材料均符合RoHS要求

12	16-012AC04-002	M12+SW14六角螺母	黄铜	镀镍	pc	1
11	51-09515A01-001	密封圈12.5x9.5x1.5	NBR	黑色	pc	1
10	12-012EM06-002	锌合金后锁M12插座壳体	锌合金	镀亚光镍	pc	1
9	29-012AM01-001	M12 8芯X扣针定位架	尼龙	黑色	pc	1
8	43-01207B01-004	ø0.65x25.28+13.78插孔 板接	磷铜	镀金	pc	2
7	43-01207B01-003	ø0.65x23.88+12.38插孔 板接	磷铜	镀金	pc	2
6	43-01207B01-002	ø0.65x21.08+9.58插孔 板接	磷铜	镀金	pc	2
5	43-01207B01-001	ø0.65x19.68+8.18插孔 板接	磷铜	镀金	pc	2
4	18-012HM04-002	波纹弹簧	锰钢	镀镍	pc	1
3	51-06515C01-001	ø9.5xø6.5x1.5密封圈	NBR	黑色	pc	1
2	13-012EM06-002	M12 8芯X扣母端绝缘体内套-弯式	锌合金	镀亚光镍	pc	1
1	62-012X08A01-001	M12 8芯X扣母端绝缘体	尼龙	黑色	pc	1
No.	ITEM NO.	Specification	Material	Treat	Unit	Q'ty

DIMENSION IN mm		<b>DCXCONN</b> DONGGUAN DINGWEI ELECTRONIC TECHNOLOGY Co.,Ltd.	
TOLERANCE UNLESS OTHERWISE SPECIFIED		TITLE: M12 8芯X扣母端后锁M12X1.0弯90° 板接插座	
.X±0.15	X.±3'	DRA. Long 2018.06.10	P/N: M12-S08XFRPBR110-01
.XX±0.10	.X.±2'	CHK. Wu 2018.06.10	DWG NO.
.XXX±0.05	.XX.±1'	APR. Liu 2018.06.10	CUSTOMER DRAWING
SIZE A4	SCALE 1:1	SHEET 1/1	REV. A